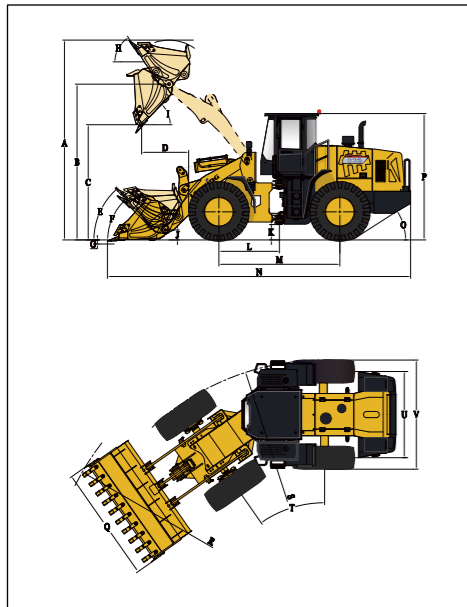


DIMENSIONS

All dimensions are approximate. Dimensions may vary with bucket and tire choice. Refer to operating specifications.



NO.	DESCRIPTION	UNIT	DATA	NGM
A	Overall Height – Bucket Raised	mm	6340	6510
B	Bucket Pin Height at Max. Lift	mm	4720	4904
C	Dump Clearance at Max. Lift (45°)	mm	3450	3706
D	Reach at Max. Lift and 45° Dump	mm	1300	1639
E	Rack Back Angle at Carry	°	48	46
F	Rack Back Angle at Ground	°	46	43
G	Digging Depth	mm	60	147
H	Rack Back Angle at Max. Lift	°	56	58
I	Dump Angle at Max. Lift	°	45	40
J	Carry Height	mm	400	400
K	Ground Clearance	mm	481	481
L	Center Line of Front Axle to Hitch	mm	1700	1700
M	Wheel Base	mm	3400	3400
N	Overall Length	mm	8800	9150
O	Departure Angle	°	30	30
P	Height to Top of Cab	mm	3540	3540
Q	Overall Width over Bucket	mm	3200	3220
R	Min. Turning Radius over Bucket	mm	7675	7794
S	Min. Turning Radius over Tires	mm	6865	6865
T	Steering Angle – Left/Right	°	35	35
U	Width at Tread Center	mm	2270	2270
V	Overall Width over Tires	mm	2945	2945

TECHNICAL PARAMETERS

BASIC	Bucket Capacity	4.2m ³
	Rated Payload	6500kg
	Operating Weight	21700±300kg
	Traction Force	195±5
	Breakout Force	210±5kN
ENGINE	L×W×H	8800×3200×3540mm
	Maker/Model	WEICHAI/WD10G240E21
	Rated Power	175kW/2200rpm
	Maximum Torque	920N·m/1400-1600rpm
	Bore x Stroke (mm)	126×130mm
	No. of Cylinders/Displacement	6/9.726L
	Air Cleaner	Three Stage Air Cleaner
	Alternator	70Amp
	Battery	2-24V/120Ah
	Starting Motor	24V/7.5kW
DRIVE TRAIN	Transmission Type	Planetary Powershift
	Shift Type	Mechanical Powershift Control
	Pressure of Transmission	1.2-1.5MPa
	Torque Converter Type	Single-stage, Duo-turbine, 4-element
	Axles	Rigid (Front)&Oscillating (Rear)
	Rear Axle Oscillation (°)	±10°
	Differential	Conventional
	Main Reducer	Spiral Bevel, 1-stage Reduction
	Final Reducer	Planetary Reduction
	Tire	26.5-25 L-3 24PR TT
BRAKE SYSTEM	Travel Speed-Forward	11.7/37 km/h
	Travel Speed-Reverse	16 km/h
	Service Brake	Single Circuit Caliper, Dry Brake
	Setting Pressure	0.70-0.78MPa
STEERING SYSTEM	Parking Brake	Air Actuated Caliper Brake
	Emergency Brake	Air Actuated Caliper Brake
	Type	Hydraulic Load Sensing System
	Pump	165L/min·2200rpm
HYDRAULIC SYSTEM	System Pressure	16MPa
	Cylinder Type	Double Acting
	Steering Angle	±35°
	Type	Double Pump Confluence
	Pump	258.5L/min·2200rpm
	Control Valve	2 Spool
SERVICE REFILL CAPACITY	System Pressure	19MPa
	Cycle Time (Sec)	≤10.8
	Fuel Tank (L)	330L
	Hydraulic Tank (L)	270L
	Crankshaft (L)	19L
Transmission (L)	63L	
Front Axle/Rear Axle (L)	31L/31L	

CONFIGURATION

WEICHAI Engine (Tier 2)
LONKING Transmission
Mechanical Powershift Control
LONKING Axles (Dry type)
Joystick Working Control (Single-lever)
MP3
ROPS&FOPS Cabin
LCD Dashboard
Air Conditioner
Pilot operation

OPTIONAL

Oil-bath Air Filter
Cold Starting(-35°C)
Radial Tires
3rd Spool for Auxiliary Function
Sliding Cabin Window
Electric Heating Rear Window
Lockable Oil Tank Cap
Rear View Camera
Bucket(Combination teeth)
Rock Bucket(3.8m ³)
Enlarged Coal Bucket(5.6m ³)
Whole LED Lights

LONKING 龙工

Efficiency Rules the Future

CDM863 WHEEL LOADER



The following blank can be used for notes or comments

For more information on Lonking products, please contact our local agent;

■ RATED POWER:	175kW/2000rpm
■ BUCKET CAPACITY:	4.2m ³
■ RATED PAYLOAD:	6500kg
■ OPERATING WEIGHT:	21700±300kg

LONKING (FU JIAN) INTERNATIONAL TRADE CO.,LTD.
 Add: 26 Minyi Road, Xinqiao, Songjiang Industrial Zone, Shanghai
 E-mail: export@lonking.cn http://www.lonkinggroup.com
 Tel: +86-21-3760 2242

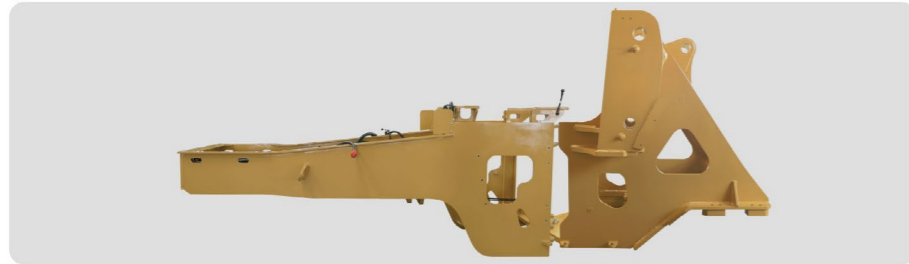
New generation CDM863 wheel loader

Lonking CDM863 series 6-ton loader: a new generation product that attaches great importance to value creation and customer experience, and is optimized and designed based on the concept of improving product reliability, economy, efficiency and adaptability. This model has the advantages of large traction force, high breakout force, strong structural stability, etc, which can meet the needs of heavy-load working conditions. It is the first choice for high-efficiency models in mining, concrete mixing stations, engineering construction and other working conditions.



Heavy-Load Design, High Strength And More Durable

- The optimized design of the front and rear frames is fully analyzed by ANSYS. At the same time, the front frame flange is made of cast steel, which is more reliable.
- The standard 26.5-25 large tires greatly improve the lateral stability and load-bearing capacity. At the same time, the front and rear wheels travel on the same track, extending the service life of the tires.
- The large-span and long-wheelbase centrally arranged structure has stronger load-bearing capacity, better overall machine stability, and longer service life. Ultra-high unloading height, ultra-large bucket capacity and high-strength design meet the needs of various working conditions.



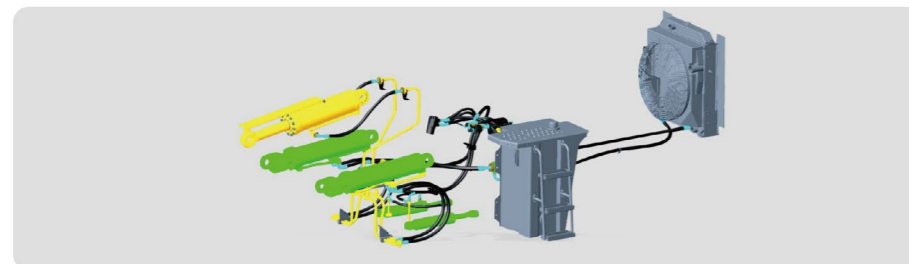
Reinforced T&A, High Reliability and High Efficiency

- Equipped with a special heavy-duty gearbox, greater load-bearing capacity, perfectly matches the engine, and further improves reliability.
- Equipped with reinforced heavy-duty drive axle, single-caliper three-cylinder piston brake for good braking performance and high reliability, reinforced gear mesh transmission shaft for more reliable transmission.
- Pneumatic caliper disc parking brake. If the parking air pressure is lower than the safety standard, emergency braking will be implemented automatically. When the cylinder is cut off and the parking brake is effective, the transmission cannot shift up, effectively preventing mis-operation and ensuring driving safety.



Lower Energy Consumption, High Efficiency and Excellent Control

- Equipped with WEICHAI tier 2 engine, with high power efficiency and low energy consumption.
- The application of a fully hydraulic load-sensing steering system and a dual-pump combined working hydraulic system enables faster arm lifting, greater breakout force, lighter steering, and more energy saving.
- The standard hydraulic pilot operating system ensures flexible and precise operation and higher work efficiency.
- Equipped with a multi-power fuel-saving switch and three-level power modes to meet different working conditions, fuel-saving and efficient.



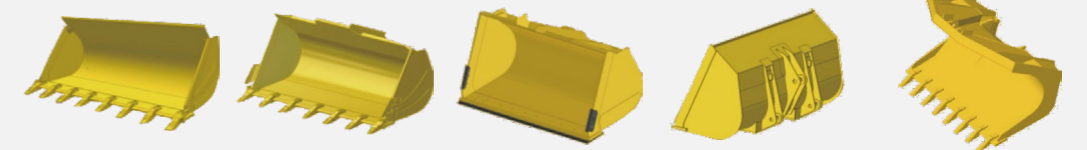
New Appearance, High Comfort and Easy Maintenance

- Beautiful and elegant new appearance cab, spacious space and wide operating field of view; new sensory cockpit design, good driving comfort.
 - Equipped with a digital LCD display multi-function instrument, rich information display ensures better control of working status.
 - Equipped with Lonking's intelligent management system, users can control various operating data and conditions of the equipment in real time through mobile phones, computers and other devices, and conduct data analysis. Users can scientifically and efficiently manage equipment and improve equipment utilization.
- The one-piece metal hood is high in strength and easy to repair; the large-opening side door of the hood provides spacious space and makes maintenance more convenient.



Various Attachment Options

Attachment Category



Bucket Type	Gravel Bucket	Side Dump Bucket	Rock Bucket	High Unloading Bucket	Coal Bucket
Bucket Capacity/Volume(m ³)	3.5	3.8	4.2	5.6	3.5
Unloading Height (mm)	3840±30	3525±30	3455±30	3705±30	3155±30
Unloading Distance (mm)	1180±30	1232±30	1303±30	1640±30	1429±30
Working Weight (kg)	21200±300	21800±300	22100±300	22100±300	23900±300
Overall Size (mm) LxWxH	9130*3050*3540	8920*3160*3540	8805*3200*3540	9150*3220*3540	9180*3180*3540
Attachment Dimensions(mm)	1593*3050*1550	1729*3160*1406	1640*3200*1613	1687*3220*1700	2045*3200*1670